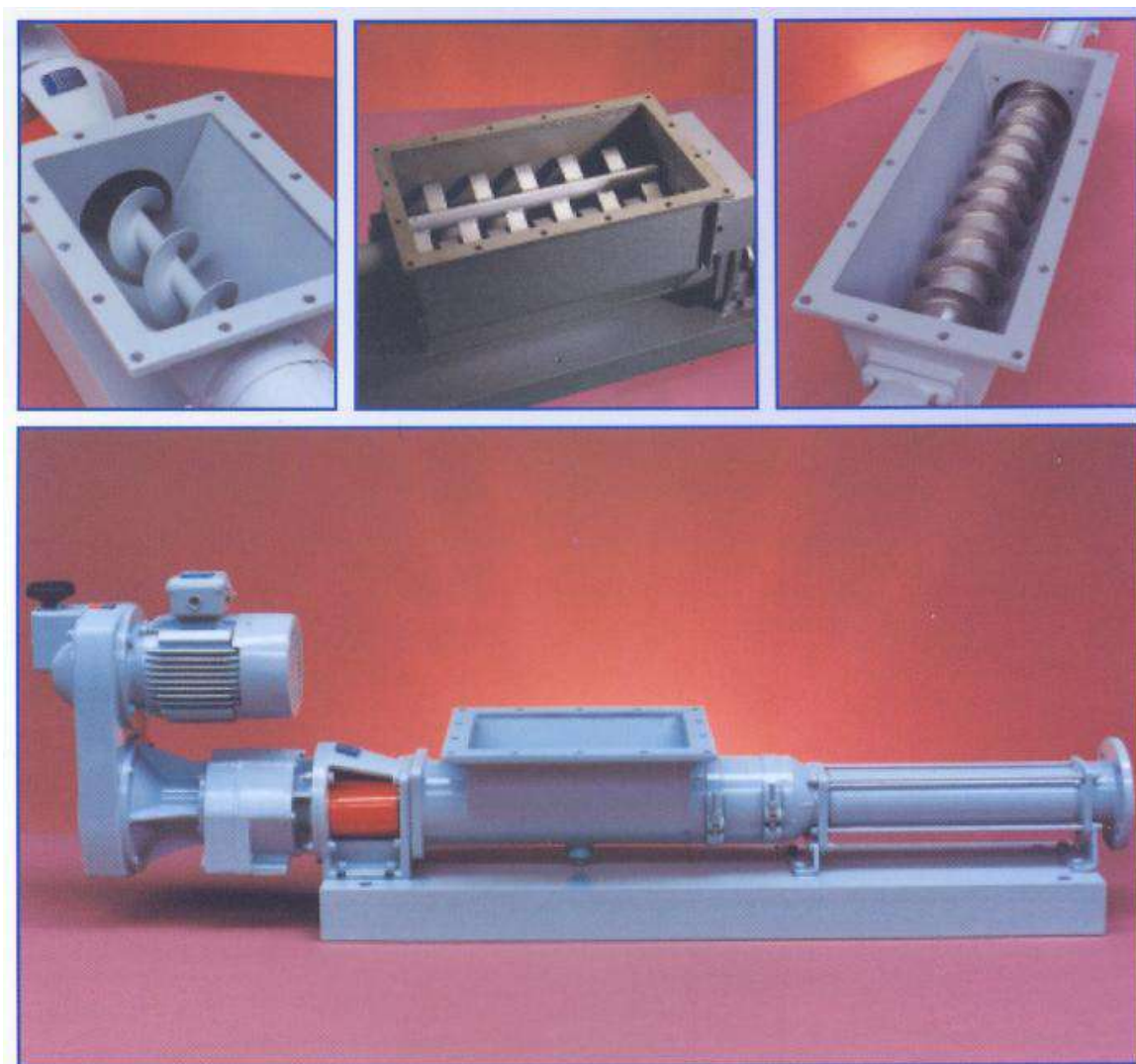


BN 系列大开口泵

BN RANGE OF WIDETHROAT PUMPS



沭泰龙流体机械(江苏)有限公司
JuTyRone Fluid Machinery(Jiangsu) Co., Ltd.

BN 系列大开口型泵

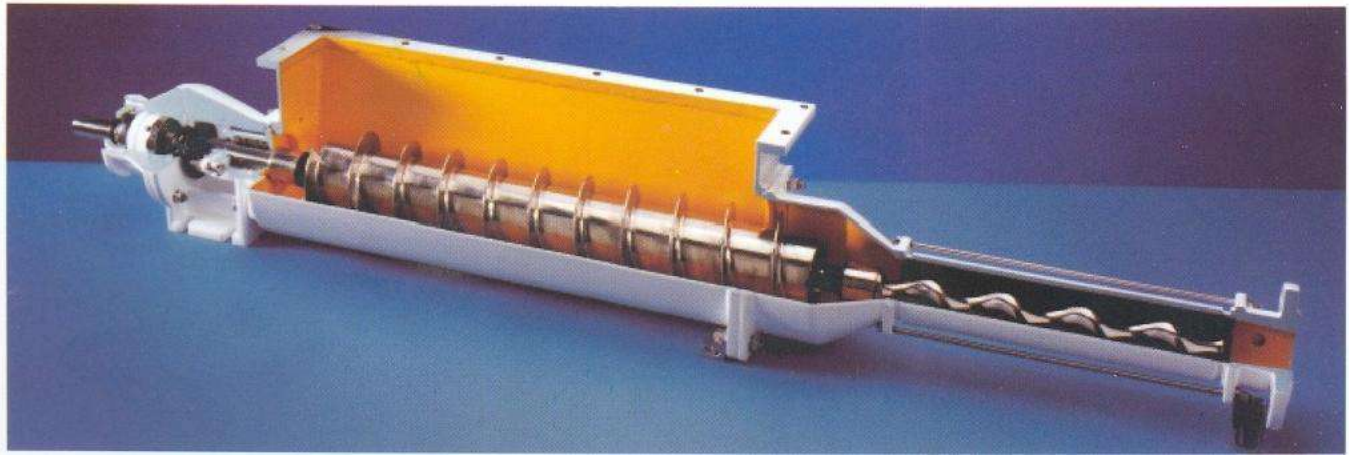
The Widethroat BN Range

新明和简介

沭泰龙流体机械（江苏）有限公司是一家集科、工、贸于一体的给排水，污水治理等及各种水泵系列的专业生产制造企业。企业通过ISO9001国际质量管理体系，先后获得了ISO14001认证、ISO45001认证，多种实用新型发明专利等并获得高效节能创新产品、政府采购优秀供应商荣誉证书，中国驰名商标荣誉证书，国际知名品牌，绿色环保节能产品荣誉证书，全国售后服务先进单位，守合同重信用企业、合同信用3A级证书、售后服务五星级证书等多项荣誉称号。

Introduction to Xinminhe

JuTyRone Fluid Machinery Jiangsu Co., Ltd. is a professional manufacturing enterprise that integrates science, industry, and trade in water supply and drainage, sewage treatment, and various water pump series. The enterprise has passed the ISO9001 international quality certification system, and has successively obtained the ISO14001 certification, ISO45001 certification, a variety of utility model invention patents, and many honorary titles such as efficient energy-saving innovative products, the honorary certificate of excellent supplier of government procurement, the honorary certificate of China's famous brand, the international famous brand, the honorary certificate of green environmental protection energy-saving products, the national exemplary organization of after-sales service, the contract abiding and trustworthy enterprise, the 3A level certificate of contract credit, and the five-star certificate of after-sales service



特征及优点

BN系列泵的设计使其可适用于许多不同的工况。

标准设计是由一个带有螺旋推进器和增大的矩形进口组成，螺旋推进器用于帮助介质进入泵的吸入腔。也可选择大口径的螺旋推进器、整体防堵器，或两者同时使用改变进口型式。

当泵配有整体防堵器或大口径螺旋推进器时，泵可输送含有近40%干沙的介质。

泵采用简洁设计和使用插入轴结构而便于维修。

采用多种材质可满足输送不同介质的需要。轴封为单机械密封，也可选填料密封。

BN系列大口径

大口径系列被设计输送高粘度的介质如污泥、泥浆、粘稠而不流动的浆糊和粘度达到1,000,000cP的脱水污泥饼。

本系列基于单、双、四、六和八级泵，压力可达到48bar，流量达到215m³/h。

对于许多困难而且变化的工况，泵以相对低的速度运行，因而泵能以最小的产品损害来输送剪切敏感产品、悬浮液中的磨蚀性固体和高粘度介质。

Features and Benefits

The design of the W range is such that many different applications can be handled. The standard design consists of an enlarged rectangular inlet with a screw conveyor to assist the product into the pumping element. Options exist that can modify the inlet with either large diameter augers, integral bridge breakers or both.

Pumps are available in most cases as Monobloc (close coupled) or as a bare shaft pump.

Dry solids approaching 40% can be handled by the pumps when fitted with either the integral bridge breakers or large augers.

The pump has been designed to facilitate maintenance through its simple design and the use of a plug in shaft facility.

The pumps are available in a range of materials to ensure a wide variety of products can be handled. Shaft sealing is a hard faced, single mechanical seal, with packed gland available as an option.

Widethroat BN Range

The Widethroat range has been designed to handle highly viscous materials such as sludges, slurries, thick non-flowing pastes and de-watered sludge cake with viscosities up to 1,000,000 cP.

The range is based on single, two, four, six and eight stage pumps which can develop pressures up to 48 bar and capacities up to 215m³/h.

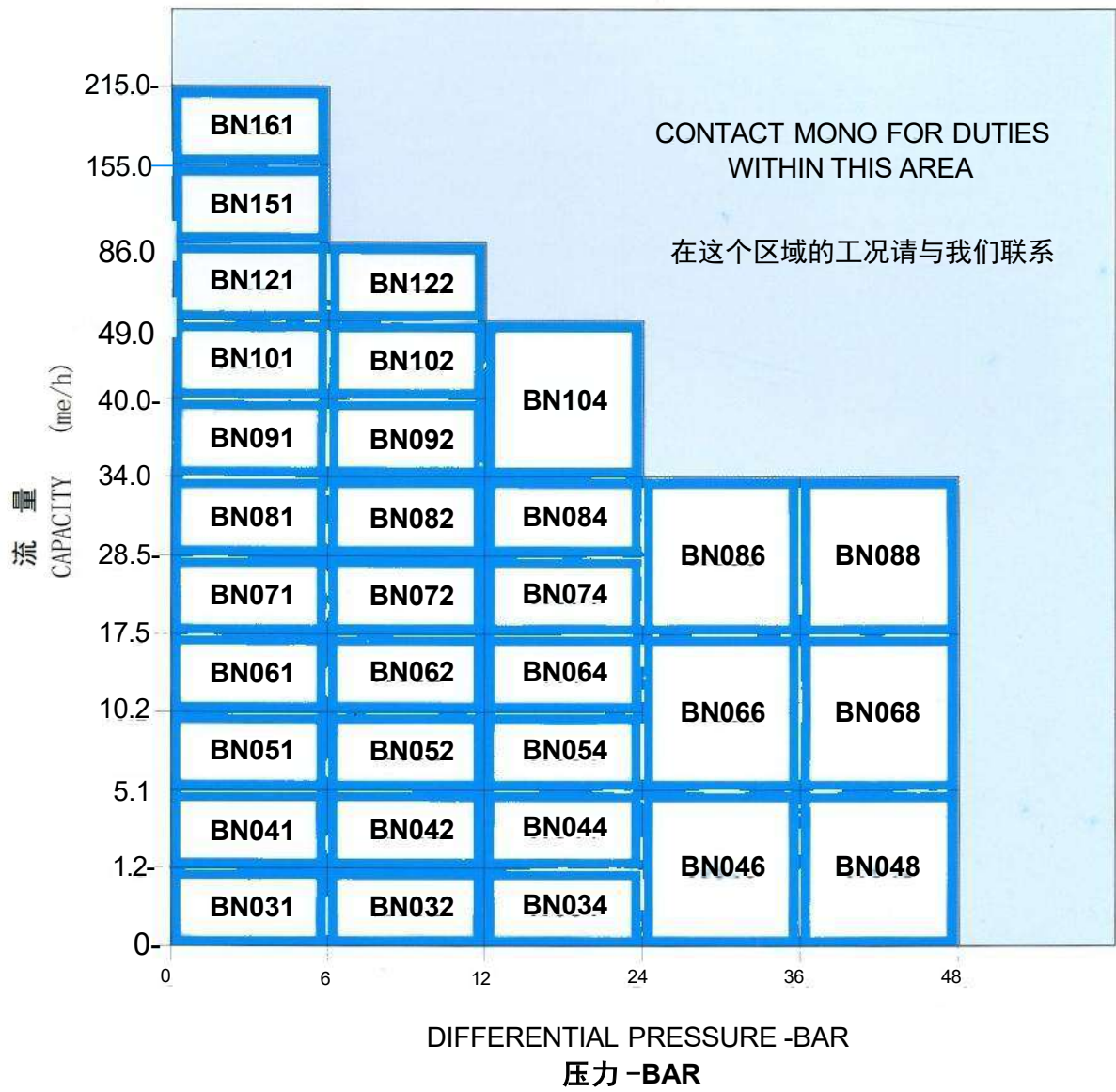
For the many difficult and varied applications encountered, the pumps are run at a relatively slow speed, therefore the pump will handle shear sensitive products with minimal product damage, abrasive solids in suspension and highly viscous materials.

性能数据

BN系列大口径典型的性能数据

Performance Data

Typical Performance Data for the Widethroat BN range



说明:

- 1. 列表显示的性能数据是基于在20° °C时清水。
- 2. 对于其它不同磨蚀度和粘度的流体选择泵的使用时请向我们咨询。

NOTES:

- 1.The tabulated performance data shown is based upon handling clean water at 20°C .
- 2.For guidance in selection of a pump for use with other fluids of varying abrasion and viscosity refer to Mono Pumps Ltd Audenshaw, Manchester.

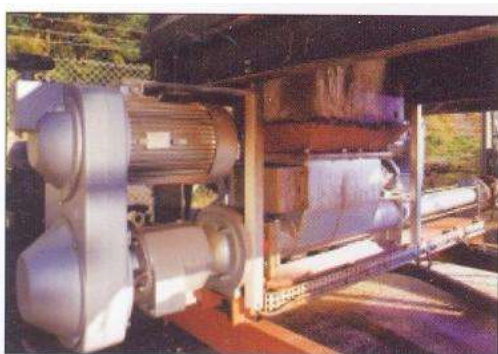
大口径BN系列的应用

Widethroat BN Range Applications



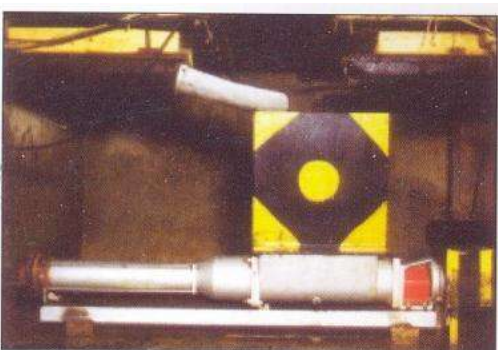
BN064型安装在污水处理厂用以控制由于带压脱水机淤泥饼直接进入户外的传送机和开放的料车过程中产生的气味。铸铁BN064型, 选择安装了整体防堵器, 在要求流量 $2.5\text{m}^3/\text{h}$ 和12bar的压力下输送污泥。每天工作8小时, 每周六天, 污泥饼每天装满四个封闭的料车。

A BN064 model installed at a sewage treatment works to control sewage odours, caused by a belt press feeding dewatered sludge cake directly onto an open-air conveyor and into an open skip for disposal. The cast iron BN064, with an integral bridge breaker fitted as an option, delivers the sludge cake at the required rate of $2.5\text{m}^3/\text{h}$ and pressures of up to 12 bar. It operates eight hours per day, six days a week and daily fills up the four enclosed skips with sludge cake.



在污水处理厂把污泥饼通过斜槽排入移动的运料车运到填埋场处理引起了一些问题。污泥是相对不易流动的固体, 要使均匀装车唯一的途径是通过人工耙整。用BN054泵装车时通过一个15米长, 直径150mm的柔性软管输送到料车上, 泵的无脉动特性可提供稳定的 $1.5\text{m}^3/\text{h}$ 流量。由于泵的工作压力为1bar, 进一步地压缩了污泥饼。其结果是运料车现在可装6吨而不是4.5吨, 显著地节约了成本。

Problems arose at a water treatment works with the discharge of sludge cake by chute into a mobile skip for disposal on landfill sites. As the sludge is a relatively immobile solid, the only way to load the skip evenly was by manually raking it out. The installation of a BN054 pump loads the skip via a 15 metre long, 150mm diameter flexible hose, and the non-pulsating nature of the pump provides an even output of $1.5\text{m}^3/\text{h}$. As the pump operates at a pressure of 1 bar, it compresses the cake still further. Significant cost savings are achieved as a result - the skip now holds 6 tonnes rather than 4.5.



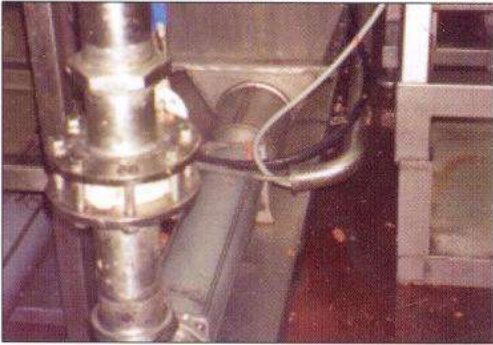
特殊设计的BN082泵在苏格兰的一家制革厂显著的提高了污水处理的效率。以前刮肉是人工从处理区铲到料车上, 这种方法劳动强度高。BN系列铸铁泵配有专门改造的大螺旋推进器和料斗以处理这种难以输送的介质。刮肉废料靠重力进入料斗, 然后在3bar的压力下以 $5.5\text{m}^3/\text{h}$ 的流量沿着30米的管子直接输送到外面的运料车以备后续处理。

A custom-built BN082 is speeding up waste disposal at a Scottish tannery. Previously the "fleshings" were shovelled manually from the processing area to a skip, this method was highly labour intensive. The cast iron BN range pump with large auger and hopper were specially modified in order to handle this difficult material. The fleshings waste is gravity fed into the hopper, then pumped at $5.5\text{m}^3/\text{h}$ at a pressure of 3bar, along 30m of pipe direct to an outside skip for disposal.



共有9台BN系列的不锈钢泵已经安装在格林威治的一家工厂沿着几百米的管线输送高粘度的物质。工作转速在123rpm至196rpm之间, 压力在3到8bar之间, 以 $4.5\text{m}^3/\text{h}$ 到 $40.5\text{m}^3/\text{h}$ 的流量输送面筋。鉴于泵必须24小时运行, 每周7天, 及最少的停机修理时间, 客户对泵提出了极高的可靠性要求。

A total of 9 stainless steel BN range pumps have been installed at a plant in Greenwich to handle highly viscous materials and transfer it along several hundred metres of pipework. Operating at speeds of between 123 rpm and 196rpm, delivering gluten at a capacity of $4.5\text{m}^3/\text{h}$ to $40.5\text{m}^3/\text{h}$ and pressures of 3 to 8 bar. Extreme reliability was specified by the customer, as the pumps have to operate 24 hours a day, seven days a week with minimum downtime for repairs.



一个机械化生产剔骨肉的客户,需将剔骨肉冷冻后出口到世界各地的食品加工厂.该客户安装了一台不锈钢的BN062泵.肉泥靠重力流入进料斗然后输送到冷冻板.冷冻系统的效率取决于每小时5吨的连续流速,以防止冷冻板闲置并延误生产线。

A customer, producing mechanically deboned meats, which are frozen before export to food manufacturers worldwide, has installed a stainless steel BN062 pump. The meat puree is gravity fed into the inlet hopper for transfer to the freezer plates. The efficiency of the freezing system relies on a constant flow rate of 5 tonnes per hour, to prevent the plates standing idle or a delay further up the line.



安装在大型污水处理厂内的污泥脱水单元是一个带式浓缩系统,带宽3×3m,0.73mm的网眼,位于积水坑的上端。当脱水污泥饼到达带的末端,落入BN072泵的进料斗,以14m³/h的流速输送到泥饼池。BN系列泵特别适合输送粘稠不流动的污泥和泥浆.使用大螺旋推进系统有助于污泥进入泵吸入腔而无挂料或堵塞。

This site's sludge dewatering unit, installed at a large sewage treatment works, is a belt thickening system, comprising 3×3m wide belt of 0.7mm mesh, located above a collection sump. As the dewatered sludge reaches the end of the belt it is deposited into the inlet hopper of the BN072 pump and transferred to holding tanks at 14m³/h. Ideal for thick non-flowing sludges and slurries the BN range incorporates an auger system which help to feed the sludge to the pumping element without bridging or blocking.



一个主要的美味馅饼、香肠卷设备的设计制造商将不锈钢BN032泵用到香肠卷灌制机上。以5-10m³/h的流速把已制备好的香肠肉以连续、均匀的长度输送到馅饼皮盒中.该泵的特点是安装了一个螺旋推进系统从而确保香肠肉从加长的送料斗连续地送入泵的吸入腔。

A leading designer and manufacturer of machinery for producing savoury pies, pasties and sausage rolls is incorporating stainless steel W032 pumps into its sausage roll manufacturing machines. Transferring prepared sausage meat in a continuous uniform length to the pastry casing at a capacity of between 5-10m³/h, the W range features an auger feeding system to ensure the sausage meat is consistently fed from the extended hopper inlet to the pumping element.

全面质量保证 Total Quality-Guaranteed

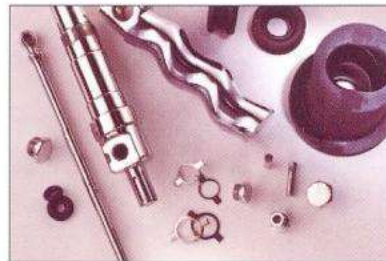
新明和公司的方针是在对客户各方面服务 达到全面质量保证。

我们对质量的承诺体现在我们所提供的高标准的售前和售后服务。我们的承诺由通过劳氏质量认证所获得的ISO9001 Part 1 得到了认可。

我们使用最新的技术,如计算机辅助柔性制造系统,计算机条形码库存信息系统。

这些控制管理系统由先进的制造设施提供保证,如综合定子制造厂,以确保我们总能以一致的高标准生产泵和部件。

使用真正的新明和配件,自然会降低泵发生故障的风险并享有新明和的全面保证。使用新明和备件意味着较低的安装成本、更高的效率、减少运行成本和提高泵的寿命—保证的品质,物有所值。



It is the policy of Mono Pumps Ltd. to achieve Total Quality performance in every aspect of customer service.

This commitment to quality, which has been recognised by our attainment of ISO9001 Part 1 of Lloyd's Register of Quality Assurance, can be seen in the high standards of pre and post sales support which we offer.

We use the latest technology, such as computer-based flexible manufacturing systems, computerised bar stores and information systems.

These control systems are supported by advanced manufacturing facilities, for example a comprehensive stator manufacturing plant, to ensure that we always produce pumps and parts to a consistently high standard.

By using only genuine Mono spares you automatically reduce the risk of pump breakdown and preserve the full Mono guarantee. Mono spares result in lower fitting costs, greater efficiency, reduced running costs and longer pump life—as well as guaranteed quality and value for money.

BN 系列泵编码

BN Range Pump Coding

FEATURES 特点	DESCRIPTION 说明	BASIC PUMP CODING 基本泵的编码									STD. VAR.				
		1	2	3	4	5	6	7	8	9	10	12	13	14	15
BODY MATERIALS 泵体材质	Cast Iron	C													
	Stainless Steel	S													
PUMP DESIGN 泵设计	Widethroat		W												
NOMINAL PUMP CAPACITY AT MAXIMUM SPEED AND ZERO PRESSURE 最大转速和零压力下的额定流量	1.2m³/h@350 rev/min			0	3										
	5.1m³/h@350 rev/min			0	4										
	10.2m³/h@350 rev/min			0	5										
	17.5m³/h@350 rev/min			0	6										
	28.5m³/h@350 rev/min			0	7										
	34m³/h@300 rev/min			0	8										
	40m³/h@250 rev/min			0	9										
	49m³/h@200 rev/min			1	0										
	86m³/h@200 rev/min			1	2										
	155m³/h@200 rev/min			1	5										
	215m³/h@200 rev/min			1	6										
PUMP STAGES 级数	One					1									
	Two					2									
	Four					4									
	Six					6									
	Eight					8									
PRIME MOVER ARRANGEMENTS AND BUILD SELECTION 原动机设备和构造选择	Monobloc B Body Options						A								
							C								
							D								
	Bare shaft						H								
MECHANICAL SEAL PUMP DESIGN 机械密封设计	Standard Auger						J								
	Large Auger						H								
	Bridge Breaker Drive Options						D								
							E								
PACKED GLAND PUMP DESIGN 填料函设计	Standard						S								
	Large Auger						L								
	Bridge Breaker Drive Options						B								
							C								
DESIGN NUMBER 标号								1							
STATOR MATERIAL 定子材质	RA, RR etc.								A						
ROTATING PARTS 转动部件	1, 3, 4, 5, 8										3				
TYPICAL BASIC PUMP CODING 典型基本泵编码	Cast Iron Widethroat size 06 four stage. Mechanical seal, Monobloc Build C with Bridge Breaker option E, Natural rubber stator, Code 4 rotating parts	C	W	0	6	4	C	E	1	A	4				
PRIME MOVER AND PORT OPTIONS 原动机和接口选择	G-Standard Bloc														
	H-Standard Bare shaft														
	C-Bare shaft - Mono Austal Alloy	C	W	0	6	4	C	E	1	A	4		G		
	A-ANSI+Access Ports														
	E-Standard ANSI														
	J-Japan														
FULL PUMP CODING TO BE STAMPED ON PUMP NAMEPLATE															

定子:

定子材质有多种选择, 包括天然橡胶(A)和腈橡胶(R)。对苛刻工况可提供特殊材料。

Stators:

Various options available including Natural (A) and Nitrile (R) rubber. Special materials can be supplied for difficult applications

转子:

标准转子可使用有镀硬铬的工具钢或镀硬铬的不锈钢。可提供特殊的转子材质以适应所输送的介质。

Rotors:

Standard rotors are available in either tool steel with hard chrome plate (hcp) and stainless steel with or without hcp. Special rotor materials can be supplied to suit the product being pumped.

密封:

标准配置为硬密封面单机械密封, 也可提供填料密封。

Sealing:

Hard faced, single mechanical seal is standard, packed gland available as an option.

驱动:

可选择直联(Monobloc)直接定速驱动或变频调速电机。

Drives:

Close coupled (Monobloc) or direct drive fixed and v/speed motors available

选择方案:

整体防堵器、大螺旋推进器和加料斗以适应不同工况。

Options:

Integral bridge breakers, large auger conveyors and hopper sizes to suit application.

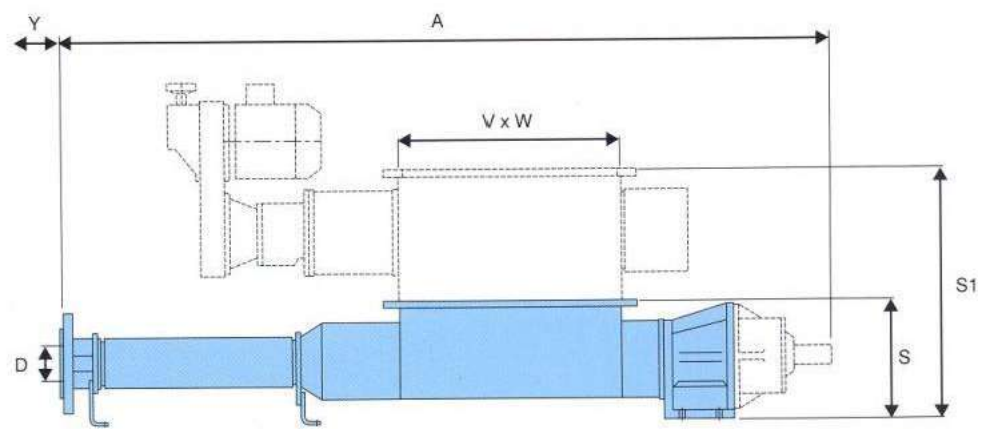
辅件:

可随时提供安全阀和物料探测设备。

Accessories:

Relief valves and product sensing equipment can be readily supplied

BN 系列外形安装尺寸 BN Range Dimensions



MODEL 型号	STANDARD+BRIDGE BREAKER 标准 + 防堵器			STD 标准	BRIDGE BREAKER 防堵器	LARGE AUGER 大口径螺旋输送机				ALL MODELS 所有型号
	Y	A	V x W	S	S1	Y	A	V x W	S	D
BN022	720	1156	320×170	185						*
BN034	750	1638	320×170	212						50
BN041	835	1324	350×250	232						65
BN042	835	1523	350×250	232	412	770	1842	750×250	282	65
BN044	890	1987	350×250	245	425	880	2293	750×250	295	80
BN051	1045	1594	500×250	247						80
BN052	1050	1859	500×250	260	435	770	2010	750×250	310	80
BN054	1100	2500	500×250	285	460	765	2657	750×250	335	100
BN061	1265	1845	650×360	285						100
BN062	1270	2249	650×360	310	515	1030	2484	1000×360	375	100
BN064	1330	2964	650×360	320	525	1035	3212	1000×360	395	125
BN071	1300	2034	650×360	330						125
BN072	1300	2402	650×360	330	525	1025	2675	1000×360	415	125
BN074	1410	3395	650×360	405	600	1035	3665	1000×360	465	125
BN081	1300	2078	650×360	330						125
BN082	1370	2587	650×360	340	550	1040	2865	1000×360	505	125
BN084	1440	3590	650×360	405	615	1030	3847	1000×360	505	150
BN091	1550	2407	800×450	360						150
BN092	1550	2869	800×450	360	575	1045	3053	1000×450	505	150
BN101	1550	2485	800×450	360						150
BN102	1625	3153	800×450	405	655	1042	3410	1000×450	550	150
BN121	1600	2784	800×450	450						200

说明:

- 1. 所有的尺寸都以毫米计，除非另有说明。
 - 2. 轴径是BS 4506:1970标准，键槽是ISO R773标准。
 - 3. 端盖尺寸是BS EN 1092标准。
 - 4. 尺寸Y是推荐的拆卸空间。可同我们协商最小的拆卸空间。
 - 5. 关于进料斗的细节，请向我们咨询。
 - 6. V&W---- 标准进料斗尺寸。
- *:1.5"BSP 出口

NOTES:

- 1.All dimensions in milimetres unless otherwise stated and for guidance only.For fullcertified drawings refer to Mono Pumps Ltd.Audenshaw,Manchester
 - 2.Shat diameters are to BS 4506:1970 and keyways to ISO R773.
 - 3.End Cover dimensions to BS EN 1092.
 - 4.Dimension Y is the preferred dismantling space.Consult Mono Pumps Ltd Audenshaw,Manchester for minimum dismantling space.
 - 5.Please refer to Mono Pumps Ltd.Audenshaw,Manchester,for hopperdiling details.
 - 6.V&W-Standard hopper size.For extended hopper sizes,please refer to Mono Pumps Ltd.For models and dimensions not shown above,plase contact Mono Pumps Ltd.
- *:1.5"BSP outlet provided

液 态 科 技

赋 能 未 来

LIQUID TECHNOLOGY

EMPOWERS THE FUTURE

联系电话 Tel: 0510-87808788

联系地址 Add: 江苏省宜兴市官林镇戈庄村杨生坝 88#

88# Yangshengba, Gezhuang Village, Guanlin Town, Yixing City, Jiangsu Province

邮箱 E-mail: sw@shinmaywer.com

网站 Web: <http://www.shinmaywer.com>

